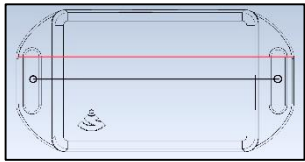
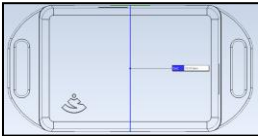


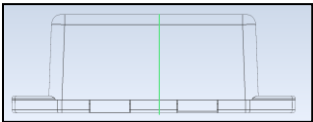
Dimensions and Template:



2.703 in. Length
2.396 in. between flange
center-holes



1.378 in. Width

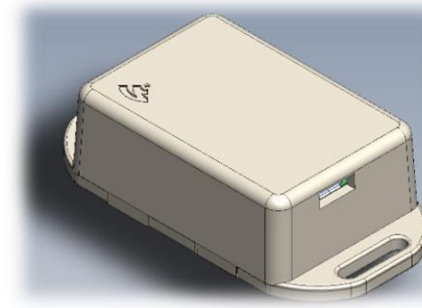


0.76 in. Depth

Quick-Start Guide



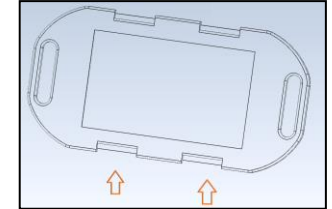
Trakkit THS (Temperature/Humidity Sensor)



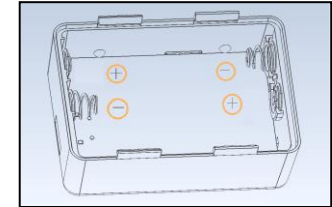
The Trakkit Temperature Humidity Sensor provides a versatile solution that includes Wi-Fi with Data Recording, Battery and Line powered modes for temperature monitoring. A micro USB port is provided to use external power (this does not charge the battery, Trakkit uses disposable lithium batteries).

Battery Installation & Removal

Batteries come pre-installed in your Trakkit. To access the battery compartment in your Trakkit, remove the bottom plate by gently prying open the side bars, one barb at a time.



Once open, carefully insert AAA batteries one at a time, paying close attention to the positive and negative contact ends. Replace bottom cover in a way such that the grooves cover the batteries.



USE ONLY ENERGIZER LITHIUM AAA BATTERIES (TYPE L92)

Install the Trakkit THS App:

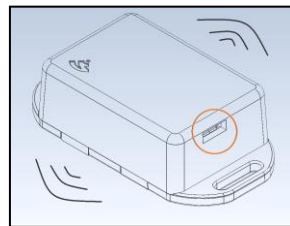
To start using your Trakkit navigate to: sensor.trakkit.us on your mobile or desktop browser. Create an Account, then select + New to Add your New Trakkit Device.



Trakkit™ is an implementer member of the Wi-Fi Alliance® and this product is Wi-Fi CERTIFIED® for consumer use.

Configure Trakkit THS to access your Wi-Fi Network:

For first time activation, plug in the provided USB cable in the area shown to put your Trakkit into Wi-Fi Configuration Mode. If the Yellow light starts flashing (and Red light solid), jump to the next section "Configure your Trakkit THS". If you see a solid Yellow light from the LED window, gently double tap the device until a blue light appears, then double tap again (within 6 seconds), to enter Configuration mode.



Detailed instructions on how to configure your device and troubleshooting help can be found at: <http://trakkitgps.com/support>

Add Wi-Fi Profiles to your Trakkit THS:

The Yellow light will begin flashing rapidly while the Red light remains solid, indicating the device is in Configuration (Access Point) mode and is ready to connect phone or laptop. If the yellow light does not begin flashing, unplug the device, wait 5 seconds, and repeat the procedure.

In your Phone Wi-Fi Settings and Connect to "TrakkitTHS-xxxx". Once connected, navigate to <http://10.123.45.1> (or tap "manage router" on android) in your browser to access the Trakkit Setup page.

Type or copy/paste the SSID and Password of the Wi-Fi network you wish to designate as a "Home" and select "Add Profile".

You should add your Mobile Hotspot as a Home Profile. You may add up to 4 "home" Wi-Fi networks for Trakkit to recognize.

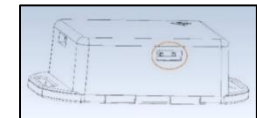
When finished, unplug the cable (or select Reboot). Note: At least 1 Home Profile must be added for Trakkit to work properly.

Firmware updates:

When new firmware is released, users will be prompted to connect the device via USB cable to a power source and authorize the update. **This update must be performed within range of one of your Home networks.** Once the update is under way, both the red and yellow LEDs will flash an alternating pattern (meaning the firmware update is downloading), then a synchronized flash to indicate the firmware is being applied. Both LEDs will turn off, followed by a steady yellow for 6 seconds once the update is complete.

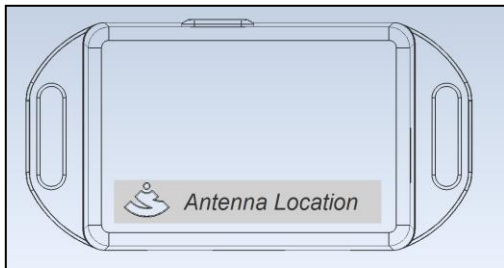
WARNING:

Please do not unplug your Trakkit until firmware upgrade has been completed (all lights off).



Mounting your Trakkit THS:

Your Trakkit may be equipped with flanges on both sides of the device for convenient mounting wherever you need it. When mounting the device, please note the antenna is located on the top logo side of the device.



Note: Different orientations and locations may affect performance

Safety Instructions

- Read, keep and follow these instructions
- Heed all warnings
- Do not use this product near water or expose the product to dripping or splashing of any water or liquid.
- Clean only with a dry cloth
- Do not install near any heat sources such as radiators, heat

registers, stoves or other apparatus (including amplifiers) that produce heat

- Only use attachments and accessories specified by the manufacturer
- Read our Product Usage Guidelines at: <https://trakkitgps.com/support/>

CAUTION: RISK OF EXPLOSION IF BATTERY IS REPLACED BY AN INCORRECT TYPE. DISPOSE OF USED BATTERIES ACCORDING TO THE INSTRUCTIONS. VORSICHT. EXPLOSIONSGEFÄHR WENN BATTERIEN EINES FALSCHEN TYPUS VERWENDET WERDEN. ENTSORGEN SIE BATTERIEN ENTSPRECHEND DER ANWEISUNGEN. ATTENTION. RISQUE D'EXPLOSION SI LA BATTERIE EST REMPLACÉE PAR UN MODÈLE INCORRECT. JETEZ LES BATTERIES USAGÉES SELON LES INSTRUCTIONS S'Y RÉFÉRANT.

WARNING: No user-serviceable parts inside. Refer all servicing to qualified service personnel.



Correct disposal of batteries in this product
(Waste Electrical & Electronic Equipment) (Applicable in countries with separate collection systems)

This marking on the product, accessories or literature indicates that the product and its electronic accessories (e.g. charger, headset, USB cable) should not be disposed of with other household waste. To prevent possible harm to the environment or human health from uncontrolled waste disposal, please separate these items from other types of waste and recycle them responsibly to promote the sustainable reuse of material resources. Household users should contact either the retailer where they purchased this product, or their local government office, for details of where and how they can take these items for environmentally safe recycling. Business users should contact their supplier and check the terms and conditions of the purchase contract. This product and its electronic accessories should not be mixed with other commercial wastes for disposal. (Applicable in countries with separate collection systems)

This marking on the battery, manual or packaging indicates that the batteries in this product should not be disposed of with other household waste. Where marked, the chemical symbols Hg, Cd or Pb indicate that the battery contains mercury, cadmium or lead above the reference levels in EC Directive 2006/66. If batteries are not properly disposed of, these substances can cause harm to human health or the environment. To protect natural resources and to promote material reuse, please separate batteries from other types of waste and recycle them through your local, free battery return system.



Disclaimer:

Some content and services accessible through this device belong to third parties and are protected by copyright, patent, trademark and/or other intellectual property laws. Such content and services are provided solely for

your personal non-commercial use. You may not use any content or services in a manner that has not been authorized by the content owner or service provider. Without limiting the foregoing, unless expressly authorized by the applicable content owner or service provider, you may not modify, copy, republish, upload, post, transmit, translate, sell, create derivative works, exploit, or distribute in any manner or medium any content or services displayed through this device.

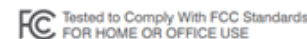
Certifications

Hereby, Trakkit LLC. declares that this product is in compliance with the essential requirements and other relevant provisions of Directive 1999/5/EC. Certified under FCC Part 15. Certified in Canada by IC to RSS-247. This Class B digital apparatus complies with Canadian ICES-003. Cet appareil numérique de la classe B est conforme à la norme NMB-003 du Canada.

This device should not be installed or operated within 20cm (8 inches) of persons or other radio emitting devices.

FCC Statement

Operation of this device is subject to the following two conditions: (1) this device may not cause interference, and (2) this device must accept any interference, including interference that may cause undesired operation of the device.



One (1) Year Limited Warranty

Trakkit LLC referred to as Trakkit, warrants this product against defects in materials and/or workmanship under normal use for a period of ONE (1) YEAR from the date of purchase by the original purchaser ("Warranty Period"). If a defect arises and a valid claim is received within the Warranty Period, then as your sole remedy (and Trakkit's sole liability), Trakkit will at its option either 1) repair the defect at no charge, using new or refurbished replacement parts, or 2) replace the Product with a new product that is functionally equivalent to the original, in each case within 30 days following receipt of the returned Product. A replacement product or part, assumes the remaining warranty of the original Product. When a Product or part is exchanged, any replacement item becomes your property and the replaced Product or part becomes Trakkit's property.

Obtaining Service: To obtain warranty service, visit trakkitgps.com to speak with a service agent or open a service request. Please be prepared to describe the Product that needs service and the nature of the problem. A purchase receipt is required. The Product must be insured, and shipped freight prepaid and securely packaged. You must contact support for a Return Material Authorization Number ("RMA Number") before shipping any Product, and include the RMA Number, a Copy of your purchase receipt and a description of the problem you are experiencing with the Product. Any claim under this Limited Warranty must be submitted to Trakkit before the end of the Warranty Period.

Exclusions: This warranty does not apply to: a) damage caused by failure to follow instructions relating to the Product's use or the installation of components; b) damage caused by accident, abuse, misuse, transport, neglect, fire, floods, earthquake or other external causes; c) damage caused by service performed by anyone who is not an authorized representative of Trakkit; d) accessories used in conjunction with a covered Product; e) a Product or part that has been modified to alter

functionality or capability; f) items intended to be periodically replaced by the purchaser during the normal life of the Product, including, without limitation, batteries, bulbs or cables; g) a Product that is used commercially or for a commercial purpose, in each case as determined by Trakkit. EXCEPT FOR BODILY INJURY, Trakkit SHALL NOT BE LIABLE FOR (I) ANY LOST PROFITS, COST OF PROCUREMENT OF SUBSTITUTE PRODUCTS, OR ANY INCIDENTAL OR CONSEQUENTIAL DAMAGES, OR (II) ANY AMOUNTS IN EXCESS OF THE PURCHASE PRICE FOR THE PRODUCT, IN EACH CASE WHETHER RESULTING FROM THE USE OF OR INABILITY TO USE THIS PRODUCT, OR ARISING OUT OF ANY BREACH OF THIS WARRANTY, EVEN IF COMPANY HAS BEEN ADVISED OF THE POSSIBILITY OF SUCH DAMAGES. SOME STATES DO NOT ALLOW THE EXCLUSION OR LIMITATION OF INCIDENTAL OR CONSEQUENTIAL DAMAGES, SO THE ABOVE LIMITATION AND EXCLUSIONS MAY NOT APPLY TO YOU.

TO THE EXTENT PERMITTED BY APPLICABLE LAW, Trakkit DISCLAIMS ANY AND ALL STATUTORY OR IMPLIED WARRANTIES, INCLUDING WITHOUT LIMITATION, WARRANTIES OF MERCHANTABILITY, FITNESS FOR A PARTICULAR PURPOSE AND WARRANTIES AGAINST HIDDEN OR LATENT DEFECTS. IF Trakkit CANNOT LAWFULLY DISCLAIM STATUTORY OR IMPLIED WARRANTIES, THEN TO THE EXTENT PERMITTED BY LAW, ALL SUCH WARRANTIES SHALL BE LIMITED IN DURATION TO THE WARRANTY PERIOD. SOME STATES DO NOT ALLOW LIMITATIONS ON HOW LONG AN IMPLIED WARRANTY LASTS, SO THE ABOVE LIMITATIONS MAY NOT APPLY TO YOU.

This warranty gives you specific legal rights and you may also have other rights, which vary from state to state. To exercise your rights under this warranty, please follow the instructions above under the heading "Obtaining Service", or contact Trakkit LLC. at, 6586 Hypoluxo Road #214. Lake Worth, FL 33467

